

LEGAL DESCRIPTION
 BLOCKS 27-30

TOTAL AREA 1,339 AC.
 UNIMPROVED PROPERTIES 8,529 AC.
 IMPROVED PROPERTIES 1,000 AC.
 TOTAL 9,529 AC.

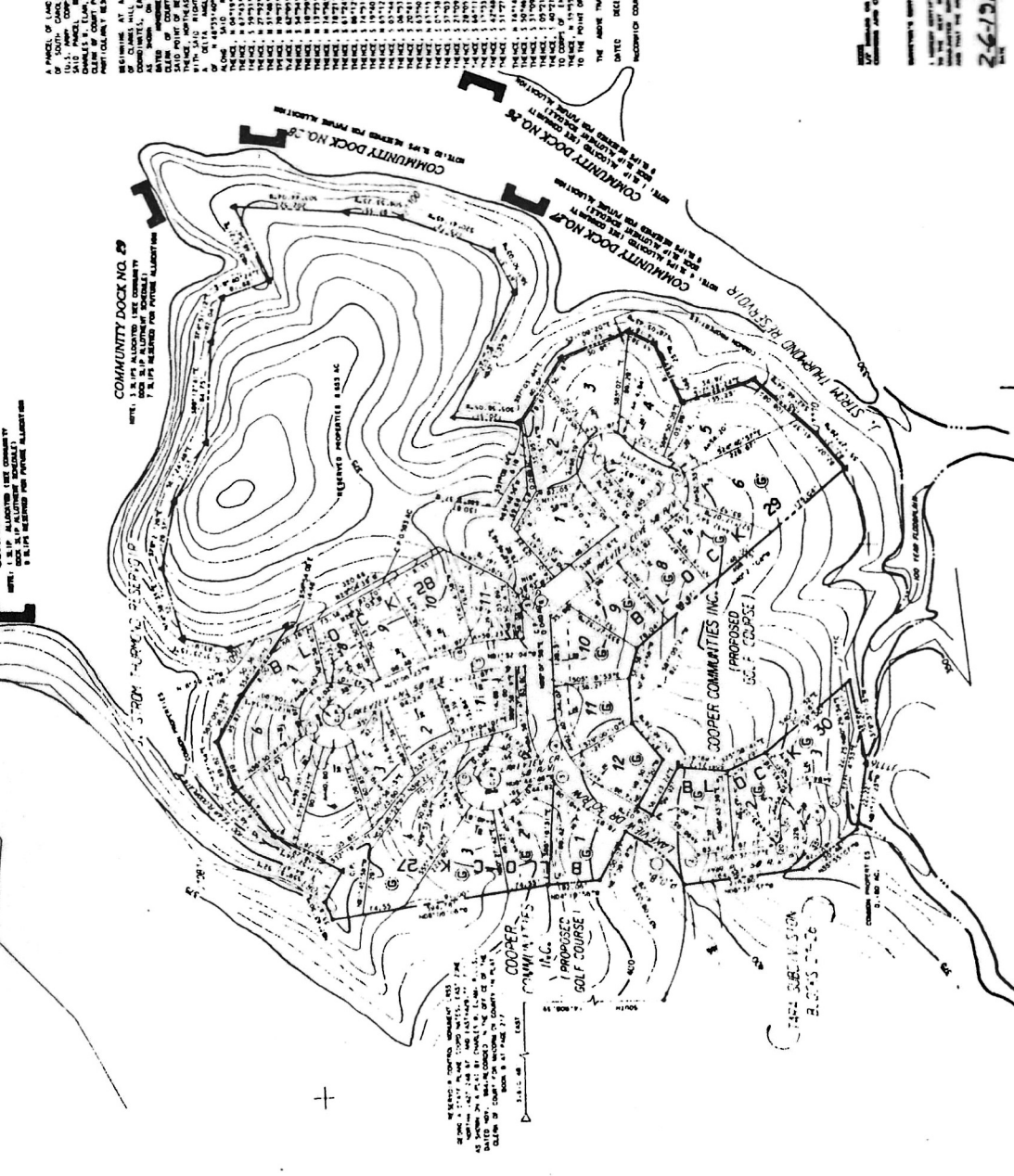
COMMUNITY DOCK NO. 29
 7.8 LOTS RESERVED FOR FUTURE ALLOTMENT

COMMUNITY DOCK NO. 30
 8.1 LOTS RESERVED FOR FUTURE ALLOTMENT

COMMUNITY DOCK NO. 31
 8.1 LOTS RESERVED FOR FUTURE ALLOTMENT

COMMUNITY DOCK NO. 32
 8.1 LOTS RESERVED FOR FUTURE ALLOTMENT

COMMUNITY DOCK NO. 33
 8.1 LOTS RESERVED FOR FUTURE ALLOTMENT



COMMUNITY DOCK NO. 29
 7.8 LOTS RESERVED FOR FUTURE ALLOTMENT

COMMUNITY DOCK NO. 30
 8.1 LOTS RESERVED FOR FUTURE ALLOTMENT

COMMUNITY DOCK NO. 31
 8.1 LOTS RESERVED FOR FUTURE ALLOTMENT

COMMUNITY DOCK NO. 32
 8.1 LOTS RESERVED FOR FUTURE ALLOTMENT

COMMUNITY DOCK NO. 33
 8.1 LOTS RESERVED FOR FUTURE ALLOTMENT

COMMUNITY DOCK NO. 29
 7.8 LOTS RESERVED FOR FUTURE ALLOTMENT

COMMUNITY DOCK NO. 30
 8.1 LOTS RESERVED FOR FUTURE ALLOTMENT

COMMUNITY DOCK NO. 31
 8.1 LOTS RESERVED FOR FUTURE ALLOTMENT

COMMUNITY DOCK NO. 32
 8.1 LOTS RESERVED FOR FUTURE ALLOTMENT

REVISION	DESCRIPTION	DATE	BY

RECORD PLAT
 TARA SUBDIVISION
 BLOCKS 27 - 30

SCALE: 1" = 100'

DATE: 2-6-1985
 BY: RLS 5637

PROFESSIONAL LAND SURVEYOR
 CHARLES W. ELAM

COMMUNITY DOCK NO. 29
 7.8 LOTS RESERVED FOR FUTURE ALLOTMENT

COMMUNITY DOCK NO. 30
 8.1 LOTS RESERVED FOR FUTURE ALLOTMENT

COMMUNITY DOCK NO. 31
 8.1 LOTS RESERVED FOR FUTURE ALLOTMENT

COMMUNITY DOCK NO. 32
 8.1 LOTS RESERVED FOR FUTURE ALLOTMENT

COMMUNITY DOCK NO. 33
 8.1 LOTS RESERVED FOR FUTURE ALLOTMENT

LOT NUMBER	COMMUNITY DOCK	APPROXIMATE DISTANCE FROM CENTERLINE
1	29	100'
2	29	100'
3	29	100'
4	29	100'
5	29	100'
6	29	100'
7	29	100'
8	29	100'
9	29	100'
10	29	100'
11	29	100'
12	29	100'
13	29	100'
14	29	100'
15	29	100'
16	29	100'
17	29	100'
18	29	100'
19	29	100'
20	29	100'
21	29	100'
22	29	100'
23	29	100'
24	29	100'
25	29	100'
26	29	100'
27	29	100'
28	29	100'
29	29	100'
30	29	100'
31	29	100'
32	29	100'
33	29	100'
34	29	100'
35	29	100'
36	29	100'
37	29	100'
38	29	100'
39	29	100'
40	29	100'
41	29	100'
42	29	100'
43	29	100'
44	29	100'
45	29	100'
46	29	100'
47	29	100'
48	29	100'
49	29	100'
50	29	100'
51	29	100'
52	29	100'
53	29	100'
54	29	100'
55	29	100'
56	29	100'
57	29	100'
58	29	100'
59	29	100'
60	29	100'
61	29	100'
62	29	100'
63	29	100'
64	29	100'
65	29	100'
66	29	100'
67	29	100'
68	29	100'
69	29	100'
70	29	100'
71	29	100'
72	29	100'
73	29	100'
74	29	100'
75	29	100'
76	29	100'
77	29	100'
78	29	100'
79	29	100'
80	29	100'
81	29	100'
82	29	100'
83	29	100'
84	29	100'
85	29	100'
86	29	100'
87	29	100'
88	29	100'
89	29	100'
90	29	100'
91	29	100'
92	29	100'
93	29	100'
94	29	100'
95	29	100'
96	29	100'
97	29	100'
98	29	100'
99	29	100'
100	29	100'

COMMUNITY DOCK NO. 29
 7.8 LOTS RESERVED FOR FUTURE ALLOTMENT

COMMUNITY DOCK NO. 30
 8.1 LOTS RESERVED FOR FUTURE ALLOTMENT

COMMUNITY DOCK NO. 31
 8.1 LOTS RESERVED FOR FUTURE ALLOTMENT

COMMUNITY DOCK NO. 32
 8.1 LOTS RESERVED FOR FUTURE ALLOTMENT

COMMUNITY DOCK NO. 33
 8.1 LOTS RESERVED FOR FUTURE ALLOTMENT

COMMUNITY DOCK NO. 29
 7.8 LOTS RESERVED FOR FUTURE ALLOTMENT

COMMUNITY DOCK NO. 30
 8.1 LOTS RESERVED FOR FUTURE ALLOTMENT

COMMUNITY DOCK NO. 31
 8.1 LOTS RESERVED FOR FUTURE ALLOTMENT

COMMUNITY DOCK NO. 32
 8.1 LOTS RESERVED FOR FUTURE ALLOTMENT

COMMUNITY DOCK NO. 33
 8.1 LOTS RESERVED FOR FUTURE ALLOTMENT

COMMUNITY DOCK NO. 29
 7.8 LOTS RESERVED FOR FUTURE ALLOTMENT

COMMUNITY DOCK NO. 30
 8.1 LOTS RESERVED FOR FUTURE ALLOTMENT

COMMUNITY DOCK NO. 31
 8.1 LOTS RESERVED FOR FUTURE ALLOTMENT

COMMUNITY DOCK NO. 32
 8.1 LOTS RESERVED FOR FUTURE ALLOTMENT

COMMUNITY DOCK NO. 33
 8.1 LOTS RESERVED FOR FUTURE ALLOTMENT



COMMUNITY DOCK NO. 29
 7.8 LOTS RESERVED FOR FUTURE ALLOTMENT

COMMUNITY DOCK NO. 30
 8.1 LOTS RESERVED FOR FUTURE ALLOTMENT

COMMUNITY DOCK NO. 31
 8.1 LOTS RESERVED FOR FUTURE ALLOTMENT

COMMUNITY DOCK NO. 32
 8.1 LOTS RESERVED FOR FUTURE ALLOTMENT

COMMUNITY DOCK NO. 33
 8.1 LOTS RESERVED FOR FUTURE ALLOTMENT

COMMUNITY DOCK NO. 29
 7.8 LOTS RESERVED FOR FUTURE ALLOTMENT

COMMUNITY DOCK NO. 30
 8.1 LOTS RESERVED FOR FUTURE ALLOTMENT

COMMUNITY DOCK NO. 31
 8.1 LOTS RESERVED FOR FUTURE ALLOTMENT

COMMUNITY DOCK NO. 32
 8.1 LOTS RESERVED FOR FUTURE ALLOTMENT

COMMUNITY DOCK NO. 33
 8.1 LOTS RESERVED FOR FUTURE ALLOTMENT